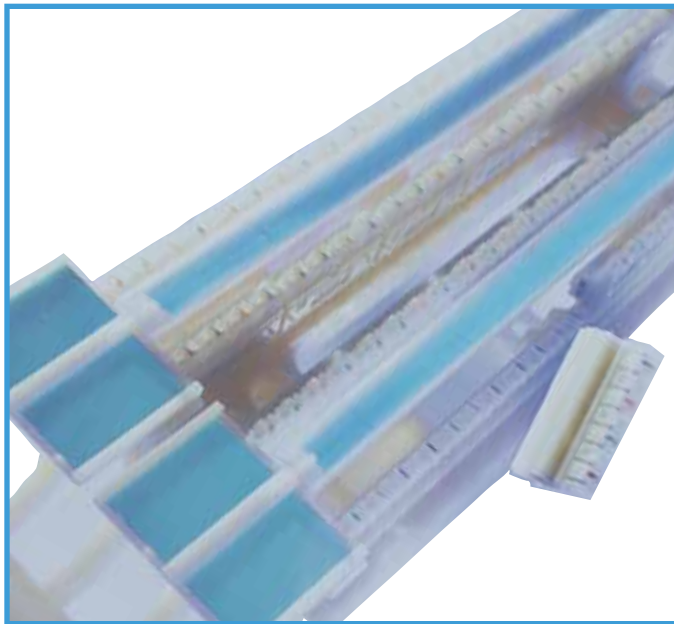


▶ COPPER CONNECTIVITY

# 110 Cross Connect System



Ortronics® Clarity® 6 and Clarity 5E blocks further expand the high performance data opportunities for 110 blocks. Offering field terminated block kits to rack or backboard mounted cross connect assemblies, Legrand | Ortronics has a 110 product to meet your application needs for performance, high density and quick termination. Legrand | Ortronics also offers a range of pre-wired 66 blocks to serve as a network demarcation point or for voice or low speed data applications.

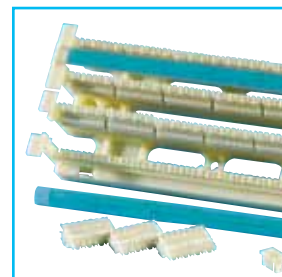
▶ Clarity 6 and  
Clarity 5E 110  
Block Kits

▶ 110  
Accessories

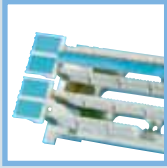
▶ 110 Panels

▶ Pre-Wired  
66 Blocks

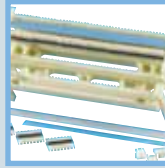
## FEATURED PRODUCTS



Clarity 6  
110 Blocks  
**P.72**



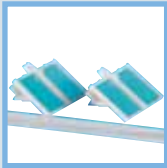
**P.72**  
Clarity 6  
Category 6  
110 Block Kits



**P.72**  
Clarity 5E  
Category 5e  
110 Block Kits



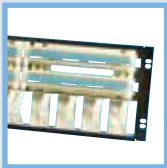
**P.72**  
110 Wiring  
Blocks for  
Voice/Data



**P.73**  
Designation  
Labeling Kits



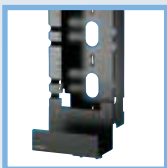
**P.74**  
110 Jumper  
Troughs



**P.73**  
19" Wide  
Rack Mount  
110 Panel Kits



**P.74**  
110 Wall Mount  
Cross Connect  
Block Kits



**P.75**  
110 Wall Mount  
Backboards  
and Cable  
Management



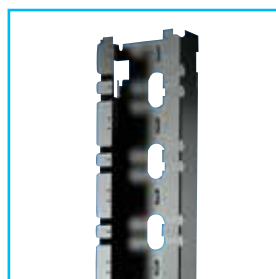
**P.76**  
110 Frames  
and Cable  
Management



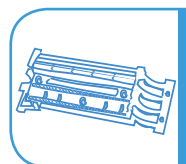
**P.77**  
Pre-Wired  
66 Blocks



110 C  
Connecting  
Block Clips  
for Voice  
**P.74**



110 Wall  
Mount  
Backboard  
Channels  
**P.75**



# CLARITY® 6 AND CLARITY 5E 110 BLOCK KITS

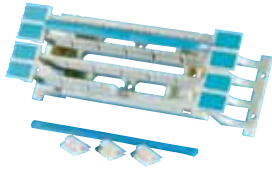
NOTE: Product dimensions are listed by width, height and depth unless specified otherwise.

The Clarity family of 110 blocks combines Category 6 and 5e performance with the ease and reliability of 110 termination and installer friendly features all within the traditional 110 block footprint. Clarity blocks are available in 50, 100, and 300-pair sizes, and provide designation areas and rear cable entry. Clarity 6 blocks use a signal feedback technique internal to the C6110C4 connector to control crosstalk without compromising impedance. Clarity 6 and Clarity 5E block kits include base wiring block, 110C connecting blocks and label holders for designation.

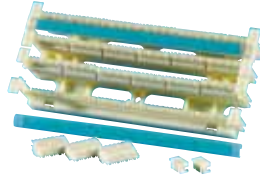


## Clarity 6 Category 6 110 Block Kits

OR-110ABC6100 with legs



OR-110DBC6100 without legs

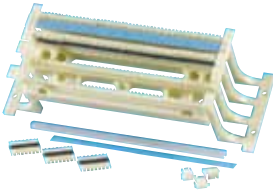


PART NO.	DESCRIPTION
OR-110ABC6050 with legs	48-pair (12 4-pair clips) 50-pair footprint, 1.8" x 10.72" x 3.25"
OR-110ABC6100 with legs	96-pair (24 4-pair clips) 100-pair footprint, 3.59" x 10.72" x 3.25"
OR-110ABC6300 with legs	288-pair (72 4-pair clips) 300-pair footprint, 10.79" x 10.72" x 3.25"
OR-110DBC6050 without legs	48-pair (12 4-pair clips) 50-pair footprint, 1.8" x 8.5" x 1.59"
OR-110DBC6100 without legs	96-pair (24 4-pair clips) 100-pair footprint, 3.59" x 8.5" x 1.59"
OR-110DBC6300 without legs	288-pair (72 4-pair clips) 300-pair footprint, 10.79" x 8.5" x 1.59"

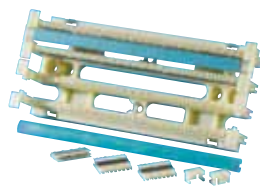


## Clarity 5E Category 5e 110 Block Kits

OR-110ABC5E100 with legs



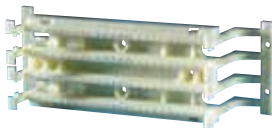
OR-110DBC5E100 without legs



PART NO.	DESCRIPTION
OR-110ABC5E050 with legs	50-pair (10 4-pair and 2 5-pair clips), 1.8" x 10.72" x 3.25"
OR-110ABC5E100 with legs	100-pair (20 4-pair and 4 5-pair clips), 3.59" x 10.72" x 3.25"
OR-110ABC5E300 with legs	300-pair (60 4-pair and 12 5-pair clips), 10.79" x 10.72" x 3.25"
OR-110DBC5E050 without legs	50-pair (10 4-pair and 2 5-pair clips), 1.8" x 8.5" x 1.59"
OR-110DBC5E100 without legs	100-pair (20 4-pair and 4 5-pair clips), 3.59" x 8.5" x 1.59"
OR-110DBC5E300 without legs	300-pair (60 4-pair and 12 5-pair clips), 10.79" x 8.5" x 1.59"

## 110 Wiring Blocks for Voice/Data

OR-30200145 with legs



PART NO.	DESCRIPTION
OR-30200145 with legs	100-pair, 3.59" x 10.72" x 3.25"
OR-30200007 with legs	300-pair, 10.79" x 10.72" x 3.25"
OR-30200143 without legs	100-pair, 3.59" x 8.5" x 1.59"
OR-30200022 without legs	300-pair, 10.79" x 8.5" x 1.59"

## 110 C Connecting Block Clips for Voice

OR-30200108



PART NO.	DESCRIPTION
OR-30200108	Three-pair (110C3)
OR-30200109	Four-pair (110C4)
OR-30200110	Five-pair (110C5)

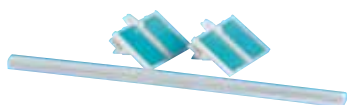
NOTE: Package of ten.

# 110 ACCESSORIES

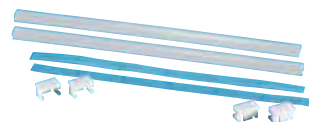
NOTE: Product dimensions are listed by width, height and depth unless specified otherwise.

## Designation Labeling Kits

OR-70400646 for blocks with legs

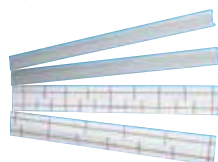


OR-70400680 for blocks without legs



PART NO.	DESCRIPTION
OR-70400646 for blocks with legs	Package of two for Clarity® 110 blocks, end label caps, clear strips and paper inserts
OR-70400680 for blocks without legs	Package of two for Clarity 110 blocks, short end caps, clear strips and paper inserts
OR-70400272*	Package of two clear strips and white paper

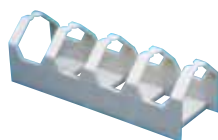
OR-70400272



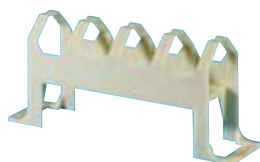
\*Not compatible with Clarity 6 Blocks

## 110 Jumper Troughs

OR-30200139



OR-30200140



PART NO.	DESCRIPTION
OR-30200139	Without legs, 8.5" x 2.69" x 2.69"
OR-30200140	With legs, 10.75" x 2.69" x 4.69"



# 110 PANELS

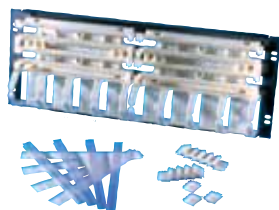
Ortronics® 110 Block Panels provide two 100-pair block kits and two jumper troughs (without legs) on a 19" wide panel that is mountable to the Ortronics Mighty Mo® rack system or to other EIA racks.

## 19" Rack Mount 110 Panel Kits

OR-302003282



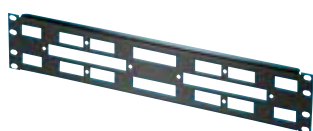
OR-302003251



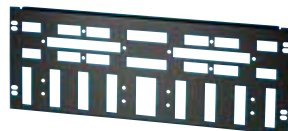
PART NO.	DESCRIPTION
OR-302003282	Clarity 6 192-pair Category 6 panel kit with troughs, 48 Category 6 110C4, 19" x 7"
OR-302003251	Category 5e 200-pair panel kit with troughs, 40-110C4 and 8-110C5 clips, 19" x 7"
OR-302003253	Category 5e 200-pair panel kit with troughs, 40-110C5 clips, 19" x 7"

## 19" Rack Mount 110 Panel (Unloaded)

OR-30600167



OR-30600150



PART NO.	DESCRIPTION
OR-30600167	Panel for two 100-pair blocks without legs, 19" x 3.5"
OR-30600150	Panel for two 100-pair blocks and two troughs without legs, 19" x 7"

# 110 PANELS

## 110 Wall Mount Cross Connect Block Kits

Ortronics® wall mount 110 field term kits are available in 100-, 300-, and 900-pair configurations. 300- and 900-pair kits can be ordered with metal back panels and horizontal wiring troughs.

Explanation of Terminal Blocks Product Code	110 - PB2 - 300FT
110	110 Family of Terminal Blocks
P	A = Includes 110 Type Wiring Blocks with legs / P = Includes 110 Type Wiring Blocks on a back panel with horizontal troughs and bottom tray
B	A = 5-pair 110 Type Connecting Blocks / B = 4-pair 110 Type Connecting Blocks
2	Voice/Data / C6 = Category 6
300	Total quantity of pairs
FT	Field terminated

### Voice/Data Wall Mount Block Kits

PART NO.	TERMINAL BLOCKS PRODUCT CODE*	110-AB2-100FT	110-AA2-100FT	110-AB2-300FT	110-AA2-300FT	110-PA2-300FT	110-PB2-300FT	110-PA2-900FT	110-PB2-900FT
OR-30203506	110-AB2-100FT					02	02	06	06
OR-30200116	110-AA2-100FT	01	01			03	03	09	09
OR-30203519	110-AB2-300FT			03	03				
OR-30200095	110-AA2-300FT			01	01				
OR-30203461	110-PA2-300FT					03	03	09	09
OR-30200020	110-PB2-300FT					03	03	09	09
OR-30200024	110-PA2-900FT					180	180	36	36
OR-30200026	110-PB2-900FT					180	180	36	36

### Clarity 6 110 Wall Mount Cross Connect Block Kits

PART NO./TERMINAL BLOCKS PRODUCT CODE*	OR-110PBC6300	OR-110PBC6900
	02	06
	03	09
	03	09
	03	09
	72	216
	02	02
	02	02
	01	01
	02	02
	02	02
	02	02
	03	09
	01	01
	01	
	01	01

### KIT CONTENTS

	Rivet/12 per package
OR-70300030	
	Holder/Insert, Designation
OR-70400272	
	110 AW4-300 Wiring Block w/legs
OR-30200007	
	110 DW4-100 Wiring Block
OR-30200143	
	110 AW4-100 Wiring Block w/legs
OR-30200145	
	110C-5 Connecting Block
	110C-4 Connecting Block
	#12 Ext. Lock Washer
	#12-14X5/8 Phillips Head Screw
	Grounding Bar
	10-32 Nut
	10-32x5/8 Phillips Head Screw
	Jumper Trough
OR-30200139	
	Bottom Tray
	300-Pair Panel
	900-Pair Panel
	Instruction Sheet

NOTE: See page 55 for color-coded designation strips. See page 75 for 110 wall mount cable management.

# PRE-WIRED 66 BLOCKS

## 110 Wall Mount Backboards and Cable Management

NOTE: Product dimensions are listed by width, height and depth unless specified otherwise.

OR-806003246



### 110 Wall Mount Backboard Channels

Ortronics® 110 backboard channels are wall mount kits, complete with hardware to mount 100-pair 110 blocks without legs and jumper troughs without legs. Channels provide protected paths for terminated cables. Kits include bottom cable trough and grounding bar.

PART NO.	DESCRIPTION
OR-806003246	300-pair backboard, 8.5" x 24.75" x 8.13"
OR-30200132	900-pair backboard, 8.5" x 62.63" x 8.13"

OR-30200132



OR-806003194



### 110 Wall Mount Backboard Channels

Ortronics single or dual channel vertical channels wall mount between 110 wall mount backboards to provide a managed path for patch cords or cross connect wire. The dual channel provides an added ability to separate cable types in vertical management.

#### Single Channel

PART NO.	DESCRIPTION
OR-806003194	300-pair backboard size, 8.5" x 23.88" x 8.13"
OR-806003196	900-pair backboard size, 8.5" x 61.75" x 8.13"

#### Dual Channel

PART NO.	DESCRIPTION
OR-806003197	300-pair backboard size, 8.5" x 23.88" x 8.13"
OR-806003199	900-pair backboard size, 8.5" x 61.75" x 8.13"

OR-60400020



### 110 Wall Mount Horizontal Cable Management Bracket

Ortronics horizontal cable management brackets wall mount between 110 wiring blocks to organize, support and provide for future changes to horizontal runs of cable.

PART NO.	DESCRIPTION
OR-60400020	10.75" x 6.5" x 4.5"

# PRE-WIRED 66 BLOCKS

## 110 Frames and Cable Management

NOTE: Product dimensions are listed by width, height and depth unless specified otherwise.

OR-MM67110D

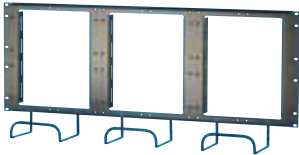


### Mighty Mo® 6 110D Distribution Frame

Ortronics® Mighty Mo 6 110D Distribution Frame provides total vertical cable management to route cable more effectively in a 110 cross connect. Use with OR-30600166 to mount 300-pair 110 blocks with legs. Front and rear mounting supports up to 9000 pairs. Includes cable management straps in 6.5" deep vertical channels. Color is black.

PART NO.	DESCRIPTION
OR-MM67110D	39" x 86" x 16.50"

OR-30600166

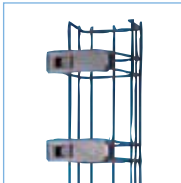


### 900-Pair Rack Mount Panel with Cable Troughs

Accepts three 300-pair 110 blocks with legs.

PART NO.	DESCRIPTION
OR-30600166	34.25" x 14.54"

OR-MM6VML706



### Mighty Mo 6 Vertical Cable Management Cage with Latches

Patented design promotes efficient routing of patch cords between racks. Hinged latches allow easy access during moves, adds, and changes. 6" wide cage creates a 2.5" gap between racks for front-to-back routing of equipment cables and patch cords.

PART NO.	DESCRIPTION
OR-MM6VML704	With latches, 4" x 6" x 7', rack units
OR-MM6VML706	With latches, 6" x 6" x 7', rack units

NOTE: Includes all hardware necessary to mount cage on face of two Mighty Mo 6 racks, single rack or end of row. Patent No. 6,365,834

# PRE-WIRED 66 BLOCKS

NOTE: Product dimensions are listed by width, height and depth unless specified otherwise.

OR-805003202



OR-8050M157B



## Pre-Wired 66 Blocks

Ortronics® pre-wired 66 blocks can be used to provide network interface connections between voice and data equipment and the public telco network as well as modular wiring connections for key telephone systems.



PART NO.	DESCRIPTION
OR-805003202	T1 network interface block, 66M150 66 block eight-port, RJ48X, on 89D, 16-pair, 10" x 2.84" x 2.71"
OR-8050F157B	Modular 66 connecting block with two 25-pair female telcos on 89D, 50-pair, 10" x 2.84" x 2.71"
OR-8050F66M150	Modular 66M150 connecting block with one 25-pair female telco on left side on 89D, 25-pair, 10" x 2.84" x 2.71"
OR-8050M66M150	Modular 66 connecting block on 89D with one 25-pair male telco on left side, 25-pair, 10" x 2.84" x 2.71"

